

Door Hardware DESIGN GUIDE

**Miles
Nelson®**
Architectural
Hardware est. 1928



*Selecting door hardware
- made easy -*

Handle Shown: Verona Satin Graphite - Square Rosette

Things to Consider

Types of Door Functions

Entrance

Exterior doors – internal locking with turn or button, key access from outside.

Deadbolt

Single cylinder key and turn or double cylinder key locking from both sides of the door.

Passage

For general interior or hallway doors (non-locking operation).

Privacy

For bedroom or bathroom doors (internal locking, emergency access from outside).

Dummy

For wardrobe and cupboard doors (fixed lever).

Thickness of the Door

Most interior door thicknesses range from 33-40mm. Exterior door thicknesses are between 40-45mm.

Both Milano & S-Range are suitable for door thickness: 32-45mm

If your door's thickness differs from these standards, you may need to purchase conversion components to ensure the hardware will work with your door.



Milano Drill Template

- 25mm hole plus 2x 7mm fixing holes
- 55mm Round or square rosette
- Door thickness 32-45mm
- Backset 60mm
- 25mm latch hole



S-Range Drill Template

- 54mm hole
- 65mm Round or square rosette
- Door thickness 32-45mm
- Adjustable backset 60-70mm
- 25mm latch hole

Door Handing

Please note that some products are handed to suit right or left hand opening doors.



RIGHT HAND
Hinges on left,
opens inward



LEFT HAND
Hinges on right,
opens inward



**RIGHT HANDED
HANDLE**



**LEFT HANDED
HANDLE**

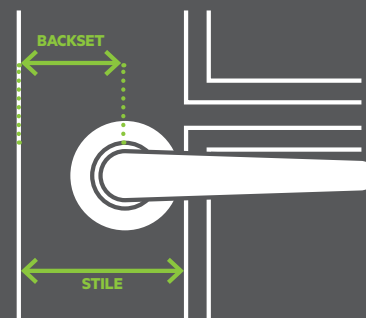
Stand on the secure side of the door (where you would insert your key, or an unlocking tool if it was a privacy set). For interior doors you should stand on the side that you would enter from i.e. In the hall if opening a hall cupboard door, in the bedroom if the door opens to an ensuite, in the hall if opening into a living room.

Replacing Hardware

If you are looking to replace hardware on an existing door, or a door with predrilled holes, you'll need to measure the diameter of the holes and make sure that the hardware rosette will cover the openings.

Measure the backset: the distance from the door edge to the centre of the handle or key barrel and the width of the door stile: which is the vertical panel at the edge of a frame and glass panel door, where the door hardware is installed.

The width of the door stile is important when selecting a lock or handle with the correct backset, particularly if the door is paneled as this reduces the available area to install hardware.



Use the Passage set drill templates to determine if your existing holes and markings will suit the Milano and/or S-Range.

Step 1

Choose Your Lever Range

Miles Nelson has two lever ranges the Milano and S-Range. The Milano Range is an up-spec from the S-Range, it has a smaller rose and is available in a variety of finishes.

If you are installing the lever on a new door with no predrilled holes you can choose from either range. If you are retro fitting a handle, view the drill hole templates first to see what range fits best (See QR code link on previous page).

Step 2

Choose a Finish/Colour and Design

Choose a finish to match your interior design and other finishes in your home like tapware.

Both lever ranges are available in the finishes **Matt Black** and **Satin Graphite** (also called Gun Metal). The **S-Range** also comes in **Satin Chrome** and the **Milano Range** features an extensive range in **Satin Nickel** and the recently released finish **Black Chrome**.

Step 3

Sliding Doors & Accessories

If you require hardware for a sliding door don't miss this step. **Flush-Pulls** are ideal for: cavity sliding doors in a wardrobe or pantry. We have **Privacy Locks** for bathroom doors in matching finishes to your levers with either a round or square rosette. **Barn doors** are on trend and we have all the hardware you need to create a masterpiece statement.

Doorstops, Hinges and Bannister Brackets are all part of putting together a cohesive hardware scheme for your home. Can't find what you are looking for? Our website offers more options.

All thats left to do is: Place your order

For Assistance, Quotes & Orders

Take the order form to your nearest retailer

Find your nearest store at: www.miles-nelson.com/retailers

Milano



Lucca - Square Rosette



Milano Satin Nickel



Parma - Round Rosette



The Milano Range offers multiple designs and finishes, and is made with solid mechanical components for superior and long-lasting performance.

Milano handles offer a consistent look throughout your home from front to backdoor and every door in between.

Most handle designs are available with round or square rosette. Rosette diameter: 55mm

Door Handle Sets

Passage Set	Includes lever set and 60mm tubular latch
Privacy Set	Includes lever set, 60mm tubular latch, privacy turn set and tubular privacy bolt
Integrated Privacy Set	Includes privacy lever set and 60mm privacy tubular latch. With auto release function that deactivates the lock by simply pushing the inside handle down.
Dummy Handle	Includes dummy lever and taylor spindle (one handle only)
Entrance Set	Includes lever set, euro escutcheons, 716SS60 euro mortice lock and euro cylinder and turn
Long Plate + Lock Set	Includes euro mortice lock and cylinder and turn

Square Rosette



Lucca - Square Rosette

Passage Set	LUC201
Integrated Privacy Set	LUC208
Privacy Set	LUC202
Dummy Handle	LUC203
Entrance Set	LUC204
Long Plate + Lock	LUC207



Verona - Square Rosette

Passage Set	VER201
Integrated Privacy Set	VER208
Privacy Set	VER202
Dummy Handle	VER203
Entrance Set	VER204
Long Plate + Lock	VER207



Parma - Square Rosette

Passage Set	PAR201
Integrated Privacy Set	PAR208
Privacy Set	PAR202
Dummy Handle	PAR203
Entrance Set	PAR204
Long Plate + Lock	PAR207



Forli - Square Rosette

Round Rosette



Lucca - Round Rosette

Passage Set	LUC101
Integrated Privacy Set	LUC108
Privacy Set	LUC102
Dummy Handle	LUC103
Entrance Set	LUC104
Long Plate + Lock	LUC107



Verona - Round Rosette

Passage Set	VER101
Integrated Privacy Set	VER108
Privacy Set	VER102
Dummy Handle	VER103
Entrance Set	VER104
Long Plate + Lock	VER107



Parma - Round Rosette

Passage Set	PAR101
Integrated Privacy Set	PAR108
Privacy Set	PAR102
Dummy Handle	PAR103
Entrance Set	PAR104
Long Plate + Lock	PAR107



Tivoli - Round Rosette

Passage Set	TIV101
Integrated Privacy Set	TIV108
Privacy Set	TIV102
Dummy Handle Left	TIV103LH
Dummy Handle Right	TIV103RH
Entrance Set	TIV104
Long Plate + Lock	TIV107



Anzio - Round Rosette

Passage Set	ANZ101
Integrated Privacy Set	ANZ108
Privacy Set	ANZ102
Dummy Handle Left	ANZ103LH
Dummy Handle Right	ANZ103RH
Entrance Set	ANZ104
Long Plate + Lock	ANZ107



Forli - Round Rosette

Passage Set	FOR101
Integrated Privacy Set	FOR108
Privacy Set	FOR102
Dummy Handle	FOR103
Entrance Set	FOR104
Long Plate + Lock	FOR107

Passage Set	FOR201
Integrated Privacy Set	FOR208
Privacy Set	FOR202
Dummy Handle	FOR203
Entrance Set	FOR204
Long Plate + Lock	FOR207



Verona - VER204



Verona - VER207



Parma - PAR107

Entrance Set



All Milano lever styles are available as an entrance set

- With turn + lock ideal for internal garage doors
- Matching round or square rosette
- Finishes: Satin Nickel, Satin Graphite & Matt Black

Long Plate Handles



All Milano lever styles in **Satin Nickel** finish are available in a long plate option in round or square edge matching the round or square rosette of the handle.

- Ideal for external doors
- Plate length W 33mm x L 240mm

For more entrance options see page 20



Milano

Satin Graphite



Tivoli - Round Rosette

Milano

Matt Black



Verona - Square Rosette

Square Rosette



Verona - Square Rosette

Passage Set	VER201SG
Integrated Privacy Set	VER208SG
Privacy Set	VER202SG
Dummy Handle	VER203SG
Entrance Set	VER204SG

Round Rosette



Verona - Round Rosette

Passage Set	VER101SG
Integrated Privacy Set	VER108SG
Privacy Set	VER102SG
Dummy Handle	VER103SG
Entrance Set	VER104SG



Parma - Round Rosette

Passage Set	PAR101SG
Integrated Privacy Set	PAR108SG
Privacy Set	PAR102SG
Dummy Handle	PAR103SG
Entrance Set	PAR104SG

Square Rosette



Verona - Square Rosette

Passage Set	VER201BLK
Integrated Privacy Set	VER208BLK
Privacy Set	VER202BLK
Dummy Handle	VER203BLK
Entrance Set	VER204BLK

Round Rosette



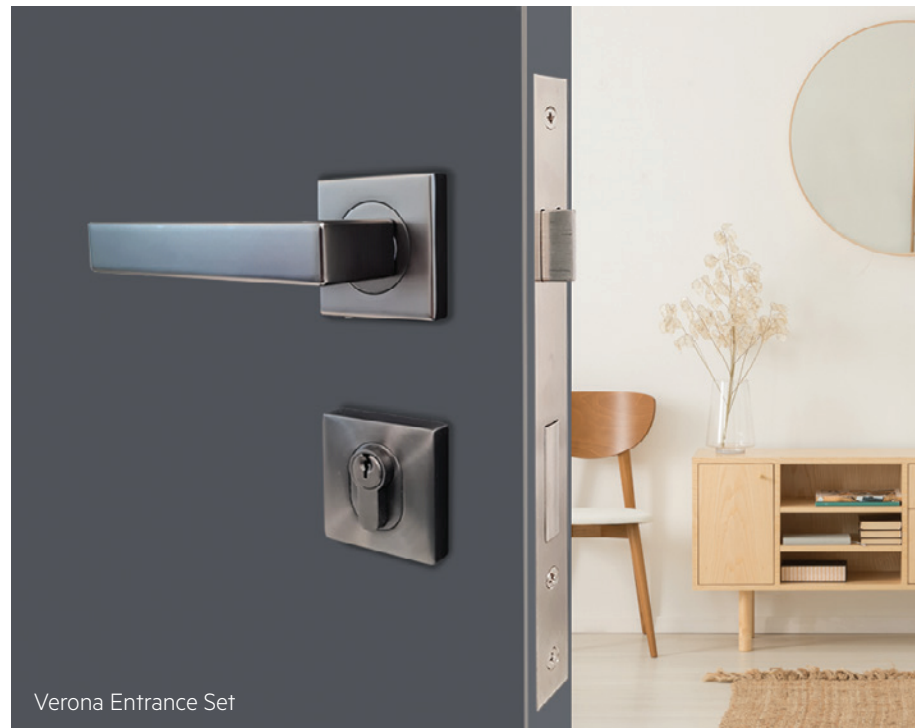
Verona - Round Rosette

Passage Set	VER101BLK
Integrated Privacy Set	VER108BLK
Privacy Set	VER102BLK
Dummy Handle	VER103BLK
Entrance Set	VER104BLK



Parma - Round Rosette

Passage Set	PAR101BLK
Integrated Privacy Set	PAR108BLK
Privacy Set	PAR102BLK
Dummy Handle	PAR103BLK
Entrance Set	PAR104BLK

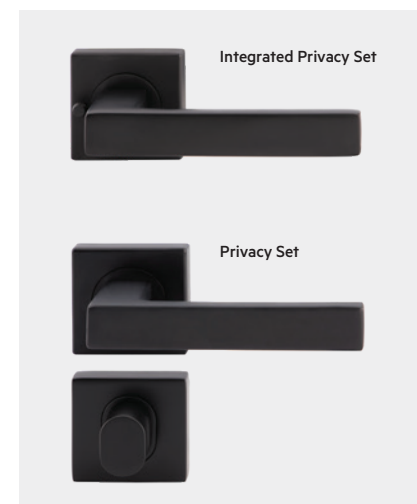
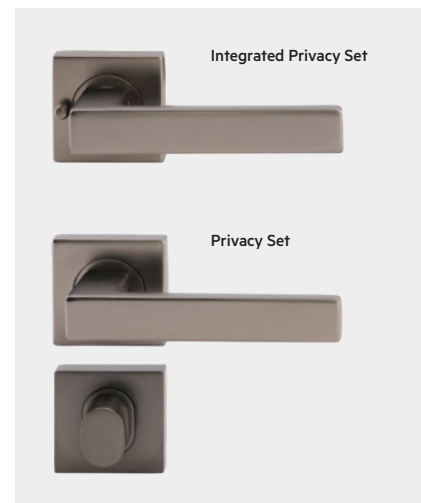


Verona Entrance Set



Tivoli - Round Rosette

Passage Set	TIV101SG
Integrated Privacy Set	TIV108SG
Privacy Set	TIV102SG
Dummy Handle Left	TIV103SGLH
Dummy Handle Right	TIV103SGRH
Entrance Set	TIV104SG



Parma - Round Rosette



Milano

Black Chrome



Parma



Luxury
Finish

S-Range



Round Rosette



Tivoli - Round Rosette

Passage Set	TIV101MBC
Integrated Privacy Set	TIV108MBC
Dummy Handle Left	TIV103MBCLH
Dummy Handle Right	TIV103MBCRH



Parma - Round Rosette

Passage Set	PAR101MBC
Integrated Privacy Set	PAR108MBC
Dummy Handle	PAR103MBC



Integrated Privacy Set

The S-Range consists of a collection of contemporary lever designs in trendy finishes. Together with a unique interlocking system the S-Range provides a quality durable handle solution.

The base rosette is 65mm in diameter, making it an ideal handle for a retro-fit /DIY job, covering existing holes and marks. The range comes standard with a round rosette cover, however a matching square rosette is also available to purchase as an accessory.

All lever styles are available in:

- Passage Set** Includes lever set (furniture only) and tubular latch
- Integrated Privacy Set** Includes privacy lever set and privacy tubular latch
- Dummy Handle** Includes dummy lever and taylor spindle (one handle only)

- S-Range handles are non-handed and fit both left and right handed doors
- Fits up to 54mm existing hole sizes. Ideal for retro fits
- The Integrated Privacy Set has an auto release function that deactivates the lock by simply pushing the inside handle down.



The Matt Black and Satin Graphite finishes are electro plated, giving a durable, long lasting finish.

Doorstops



Door stop - floor mount

H 65mm x W 30mm	201FS65MBC
H 40mm x W 30mm	201FS40MBC



Door stop - wall mount

Length 80mm	400MBC
Base size 30mm	



Square Rosette Cover

All S-Range handles are supplied with a round rosette. Square rosette covers are available separately in any of the finishes.

- Features unique locking lugs to ensure it remains square on the door.

Passage and Dummy	SCOVER	(pair)	SC
	SCOVERBLK	(pair)	MB
	SCOVERSG	(pair)	SG
Privacy	SPCOVER	(pair)	SC
	SPCOVERBLK	(pair)	MB
	SPCOVERSG	(pair)	SG



Square and Round Deadbolt

A deadbolt with turn + lock is ideal for internal garage doors, and is available in matching round or square rosette.

- C4 keyed turn + lock
- Manufactured to grade 3 standard
- Supplied with adjustable bolt, 60 or 70mm backset
- Suits door thickness: 32-45mm
- SC Keyed alike barrels available on request

Square	DEAD1	SC
	65 x 65mm DEAD1BLK	MB
	DEAD1SG	SG
Round	DEAD2	SC
	65 x 65mm DEAD2BLK	MB
	DEAD2SG	SG



Satin Chrome SC Matt Black MB Satin Graphite SG

S-Range

Sara



Satin Chrome **SC** Matt Black **MB** Satin Graphite **SG**

S-Range

Shiloh



Satin Chrome **SC**



Sara - Satin Chrome

Passage Set	SAR101
Integrated Privacy Set	SAR102
Dummy Handle	SAR103



Sara - Matt Black

Passage Set	SAR101BLK
Integrated Privacy Set	SAR102BLK
Dummy Handle	SAR103BLK



Sara - Satin Graphite

Passage Set	SAR101SG
Integrated Privacy Set	SAR102SG
Dummy Handle	SAR103SG



Sara SAR101BLK + SCOVERBLK
Pictured with square rosette cover
(square cover sold separately)



Shiloh - Satin Chrome

Passage Set	SHI101
Integrated Privacy Set	SHI102
Dummy Handle	SHI103



Integrated Privacy Set



Shiloh SHI101 + SCOVER
Pictured with square rosette cover
(square cover sold separately)

S-Range

Sienna



Satin Chrome **SC**

S-Range

Skyler



Satin Chrome **SC** Matt Black **MB**



Sienna - Satin Chrome

Passage Set	SIE101
Integrated Privacy Set	SIE102
Dummy Handle	SIE103



Integrated Privacy Set



Sienna SIE101 + SCOVER
Pictured with square rosette cover
(square cover sold separately)



Skyler - Satin Chrome

Passage Set	SKY101
Integrated Privacy Set	SKY102
Dummy Handle	SKY103



Skyler - Matt Black

Passage Set	SKY101BLK
Integrated Privacy Set	SKY102BLK
Dummy Handle	SKY103BLK



Integrated Privacy Set



Skyler SKY101BLK + SCOVERBLK
Black pictured with square rosette cover
(square cover sold separately)

10 YEAR MECHANICAL WARRANTY

10 YEAR MECHANICAL WARRANTY

Flush Pulls



Cavity Sliders



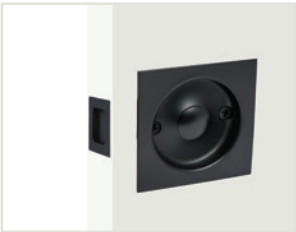
Flush Pull



- Flush Pull**
- Made from aluminium
 - Fixings supplied
 - Sold as singles
 - Excl. finger pull (order separately see below)

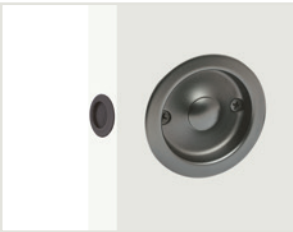
	772SC	SC
Size: 42 x 126 x 16mm	772SN	SN
Centre to centre: 96mm	772BLK	MB
	772SG	SG
	773SC	SC
Size: 42 x 158 x 16mm	773SN	SN
Centre to centre: 128mm	773BLK	MB
	773SG	SG
	774SN	SN
Size: 42 x 190 x 16mm	774SG	SG
Centre to centre: 160mm		
	775SN	SN
Size: 42 x 254 x 16mm	775SG	SG
Centre to centre: 224mm		

Square Rosette



Square Cavity Slider Passage Set	
• Non-locking	
542SC	SC
542SN	SN
542SG	SG
542BLK	MB
Square Cavity Slider Privacy Set	
• Locking	
541SC	SC
541SN	SN
541SG	SG
541BLK	MB

Round Rosette



Round Cavity Slider Passage Set	
• Non-locking	
537SC	SC
537SN	SN
537SG	SG
537BLK	MB
Round Cavity Slider Privacy Set	
• Locking	
536SC	SC
536SN	SN
536SG	SG
536BLK	MB

Finger Pull



- Square Finger Pull**
- For cavity door edges and cupboard doors
 - To be glued into the same size diameter hole
- Round Finger Pull**
- For cavity door edges and cupboard doors
 - To be glued into the same size diameter hole
 - 10mm depth

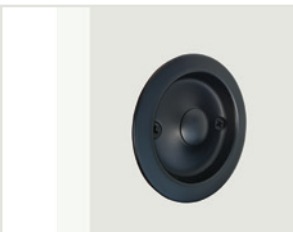
Flange:	748SS26	SS
25mm (Outer) x	748PB26	MB
16mm (Inner) x	748SG26	SG
18mm depth		

TIP: Use stainless steel for SC and SN

Size 30mm	744PB30	MB
Inner circle 26mm	744SC30	SC
	744SC40	SC
Size 40mm		
Inner circle 35mm		
	744SC50	SC
Size 50mm		
Inner circle 40mm		



Square Cavity Slider Dummy	
• Non-locking	
543SC	SC
543SG	SG
543BLK	MB



Round Cavity Slider Dummy	
• Non-locking	
538SC	SC
538SG	SG
538BLK	MB

Suitable for doors 35mm-45mm thick. 54mm fitting hole. 65mmW x 65mmH. Fixings supplied. Includes finger pull for Passage and Privacy sets.





ACCESSORIES

Now you have decided on a **Handle Style** and **Finish**, there is only one step left, matching accessories! Doorstops, Hinges & Bannister Brackets are all part of putting together a cohesive hardware scheme for your home.

Barndoor sets

Barn doors add an aesthetically interesting appeal to any space. While standard doors need a wide area to open and close, barn doors only require adequate wall space meaning you can maximise the use of available floor space.

10 YEAR MECHANICAL WARRANTY

Barn Door Track Kit for Single Doors

Includes 2 straight hangers straps with wheels, 1 door channel with stainless steel floor guide, adjustable soft close and 2 adjustable door stops

2000mm Track	BDTKS2
2500mm Track	BDTKS25
3000mm Track	BDTKS3
3500mm Track	BDTKS35
4000mm Track	BDTKS4
4500mm Track	BDTKS45

Barn Door Track Kit for Bi-parting Doors

Includes 4 straight hangers straps with wheels, 2 door channels with stainless steel floor guides, adjustable soft close and 4 adjustable door stops

3000mm Track	BDTKD3
3500mm Track	BDTKD35
4000mm Track	BDTKD4
4500mm Track	BDTKD45



Wavy Barn Door Kit Back to Back Pull Handle

- 2 x pull handles
- 250mm centre to centre
- Matt black on solid stainless steel

BDK1

MB




Wavy Barn Door Kit Pull Handle + Flush Pull

- 1 x pull handle 250mm centre to centre
- 1 x flush pull, 42 x 158 x 16mm
- Matt black on solid stainless steel

BDK2

MB



Round Barn Door Kit Back to Back Pull Handle

- 2 x pull handles
- 450mm overall
- 250mm centre to centre
- Matt black on solid stainless steel

BDK3

MB



Square Barn Door Kit Back to Back Pull Handle

- 2 x pull handles
- 600mm overall
- 560mm centre to centre
- Matt black on solid stainless steel

BDK5

MB



Square Barn Door Kit Pull Handle + Flush Pull

- 1 x pull handle 560mm centre to centre
- Pull handle 600mm overall
- 1 x flush pull, 42 x 158 x 16mm
- Matt black on solid stainless steel

BDK6

MB



Round Barn Door Kit Pull Handle + Flush Pull

- 1 x pull handle 250mm centre to centre
- Pull handle 450mm overall
- 1 x flush pull, 42 x 158 x 16mm
- Matt black on solid stainless steel

BDK4

MB



Can't find what you are looking for? Our website offers more accessory options.

www.milesnelson.co.nz

10 YEAR MILES NELSON WARRANTY

Satin Nickel Accessories

Bannister Brackets



310 Bannister Bracket
310SN

- Concealed fixing
- Suits square and round rails
- Includes flat rail adapter
- Fixings supplied
- Base diameter: 58mm
- Wall projection: 75mm
- Upstand height: 75mm

810 Bannister Bracket
810SN1

- Concealed fixing
- Includes flat rail adapter
- Supplied with hanger bolt
- Fixings supplied
- Base diameter: 30mm
- Wall projection: 70mm
- Upstand height: 60mm

810 Bannister Bracket with rosette
810SNWB1

- Concealed fixing
- Includes flat rail adapter
- Fixings supplied
- Base diameter: 55mm
- Wall projection: 78mm
- Upstand height: 60mm

Door Hinge



Hinge Radius edge
520SNH9060

- Radius edge
- Made from steel
- Loose pin
- Excl. screws
- Size: 90mmH x 60mmW x 2mmD

Square Doorstops



Square Magnetic Door Stop
714SN

- Floor or skirting mount
- Length: 80mm

Square Door Stop
806SN

- Skirting mount
- Length: 75mm



Square Door Stop
809SN

- Floor mount
- Size: 40mm

Square Latching Door Stop
218SN

- Wall mount
- Length: 75mm
- Base size: 45mm



Round Doorstops

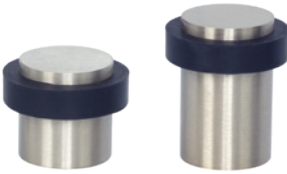


Round Magnetic Door Stop
808SN

- Floor or skirting mount
- Adjustable length: 80-95mm

Round Door Stop
404SN

- Skirting mount
- Length: 85mm



Round Door Stop

- Floor mount
- Height: 40mm **207SN40**
- Height: 60cm **207SN60**



Wardrobe/Cupboard Handle
0651BN3061XXL

- Overall size: 226mm
- Size CC: 192mm
- Projection: 27mm
- Supplied with 38mm and 22mm screws

Satin Chrome Accessories

Bannister Brackets



310 Bannister Bracket
310SC

- Concealed fixing
- Suits square and round rails
- Includes flat rail adapter
- Fixings supplied
- Base diameter: 58mm
- Wall projection: 75mm
- Upstand height: 75mm

810 Bannister Bracket
810SC1

- Concealed fixing
- Includes flat rail adapter
- Supplied with hanger bolt
- Fixings supplied
- Base diameter: 30mm
- Wall projection: 70mm
- Upstand height: 60mm

810 Bannister Bracket with rosette
810SCWB1

- Concealed fixing
- Includes flat rail adapter
- Fixings supplied
- Base diameter: 55mm
- Wall projection: 78mm
- Upstand height: 60mm

Door Hinge



Hinge Radius edge
520SCH9060

- Radius edge
- Made from steel
- Loose pin
- Excl. screws
- Size: 90mmH x 60mmW x 2mmD

Square Doorstops

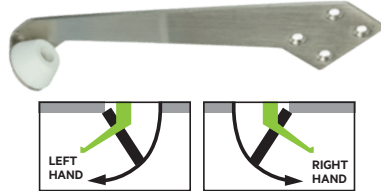


Square Door Stop
806SC

- Skirting mount
- Length: 75mm

Overhead Door Stop with White Rubber

- Left hand **763SSL**
- Right hand **763SSR**
- Stainless steel finish
- Made from stainless steel SS304



Pedestal Door Holder

- Made from aluminium satin chrome anodised
- Height: 280mm
- Upstand: 50 x 50mm
- Base: 90mm x 90mm

Pedestal including 600SC Manual Latch back **619SC**

Door Magnets



- Countersunk fixings supplied
- N42 magnet strength
- Size: 22 x 6mm

Size: 22 x 6mm **1 pair** **332CP**

6 pairs **332/6CP**

Size: 24 x 8mm **1 pair magnet with cups** **332MWC**

Round Doorstops



Round Magnetic Door Stop
808SC

- Adjustable length: 80-95mm

Round Door Stop
202DS85A

- Skirting mount
- Length: 85mm



Round Door Stop

- Height: 40mm **207SC**
- Height: 60cm **207BS60**
- Floor mount

Round Latching Door Stop
600SC

- Wall mount
- Length: 85mm



Satin Graphite Accessories



Bannister Brackets



310 Bannister Bracket 310SG

- Concealed fixing
- Suits square and round rails
- Includes flat rail adapter
- Fixings supplied
- Base diameter: 58mm
- Wall projection: 75mm
- Upstand height: 75mm



810 Bannister Bracket 810SG

- Concealed fixing
- Includes flat rail adapter
- Supplied with hanger bolt
- Fixings supplied
- Base diameter: 30mm
- Wall projection: 70mm
- Upstand height: 60mm



810 Bannister Bracket with rosette 810SGWB

- Concealed fixing
- Includes flat rail adapter
- Fixings supplied
- Base diameter: 55mm
- Wall projection: 78mm
- Upstand height: 60mm

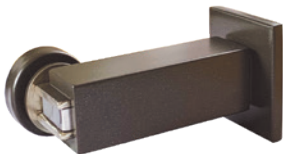


Hinge Radius edge 520SGH9060R

- Radius edge
- Made from steel
- Loose pin
- Screws supplied
- Size: 90mmH x 60mmW x 2mmD

Door Hinge

Square Doorstops

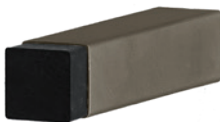


Square Magnetic Door Stop 714SG

- Floor or skirting mount
- Length 80mm

Square Door Stop 806SG

- Skirting mount
- Length: 75mm



Square Door Stop 809SG

- Floor mount
- Size: 40mm

Round Doorstops

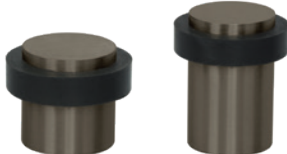


Round Magnetic Door Stop 808SG

- Floor or skirting mount
- Adjustable length 80-95mm

Round Door Stop 202SG85A

- Skirting mount
- Length: 85mm



Round Door Stop
Height 40mm **207SG40**
Height 60cm **207SG60**

- Floor mount

Matt Black Accessories



Bannister Brackets



310 Bannister Bracket 310PB

- Concealed fixing
- Suits square and round rails
- Includes flat rail adapter
- Fixings supplied
- Base diameter: 58mm
- Wall projection: 75mm
- Upstand height: 75mm



810 Bannister Bracket 810PB

- Concealed fixing
- Includes flat rail adapter
- Supplied with hanger bolt
- Fixings supplied
- Base diameter: 30mm
- Wall projection: 70mm
- Upstand height: 60mm



810 Bannister Bracket with rosette 810PBWB

- Concealed fixing
- Includes flat rail adapter
- Fixings supplied
- Base diameter: 55mm
- Wall projection: 78mm
- Upstand height: 60mm



Hinge Radius edge 520PBH9060

- Radius edge
- Made from steel
- Loose pin
- Screws supplied
- Size: 90mmH x 60mmW x 2mmD

Door Hinge

Square Doorstops



Square Magnetic Door Stop 714PB

- Floor or skirting mount
- Length 80mm

Square Door Stop 806PB

- Skirting mount
- Length: 75mm



Square Door Stop 809PB

- Floor mount
- Size: 40mm

Round Doorstops



Round Magnetic Door Stop 808PB

- Floor or skirting mount
- Adjustable length 80-95mm

Round Door Stop 202DS85APBB

- Skirting mount
- Length: 85mm



Round Door Stop
Height 40mm **207PB**
Height 60cm **207PB60**

- Floor mount

Pedestal Door Holder

- Made from aluminium satin chrome anodised
- Height 280mm
- Upstand 50 x 50mm
- Base 90mm x 90mm

Pedestal including 600PB Manual Latch back 619PB



Round Latching Door Stop 600PB

- Wall mount
- Size: 80mm



Mantis Latching Door Stop Floor Mount 609SG

- Made from forged brass
- Latch height 125mmH
- Base size 42mmW x 55mmL
- Keeper plate 40 x 40mm
- Self latching with foot release
- Fixings supplied

Mantis Latching Door Stop 609SGWM

- Wall mount
- Size engaged: 80mm



Miles Nelson
Architectural Hardware est. 1928



Miles Nelson
Architectural Hardware est. 1928



Right hand model shown

Digital Lock

The latest electronic lock from Miles Nelson® offers unparalleled levels of security and convenience to the home owner. It is easy to programme and lets you create personal and temporary electronic keys that will allow access. It features 4 access methods - key, pin, remote or fob. Add up to 50 user codes at any one time. You can add 3 management master codes.

- Access your home by 4 way access - key, pin, remote or fob
- Palm touch - Illuminated touch pad
- High IP65 rating for water and dust ingress resistance
- Glass screen / UV protected
- Suits aluminium and timber doors 38 - 50mm thick
- Supplied with a 70mm backset that requires a minimum 110mm stile width
- 3 year warranty
- Supplied with 2 x mechanical keys, 3 x fobs, 2 x remotes, batteries included
- Unit dimensions: w 75 x h 195 x d 30mm. Handle projection 70mm

Digital Lock		Additional Accessories	
Left Hand	MN9000L	Remote	MN9000REMOTE
Right Hand	MN9000R	Fob	MN9000FOB



Illuminating touch pad



**4 way access:
Pin, fob, remote & key**



**Glass UV reflective front provides
protection against heat, fading and
sun damage**



**High IP65 rating for water and dust
ingress resistance**



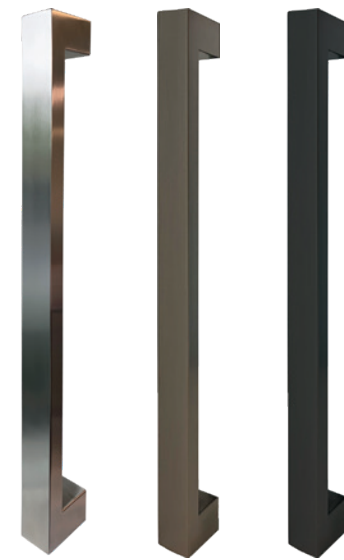
Up to 50 user codes



**316 MARINE GRADE
STAINLESS STEEL**

M1 Pull Handle Stainless Steel + C4 Keyed Lock & Turn Unit

Entrance Pull Handles



M1 Pull Handle

- Grip size: 40 x 20mm

Size: 300mm, centre to centre: 260mm	781SS300	SS
Size: 450mm, centre to centre: 410mm	781SS450	SS
	781SS600	SS
Size: 600mm, centre to centre: 560mm	781SG600	SG
	781SS600BLK	MB
Size: 900mm, centre to centre: 860mm	781SS900	SS
Size: 1200mm, centre to centre: 1160mm	781SS1200	SS



M2 Pull Handle



M2 Pull Handle

- Grip size: 25 x 13mm

Size: 300mm, centre to centre: 250mm	782SS300	SS
Size: 450mm, centre to centre: 400mm	782SS450	SS
Size: 600mm, centre to centre: 550mm	782SS600	SS
Size: 900mm, centre to centre: 850mm	782SS900	SS

All M1 & M2 Handles are: 316 Marine grade stainless steel tube. Back to back pair. Suits door thickness 40-52mm. Fixings supplied



M3

Entrance Pull Handles

316 MARINE GRADE STAINLESS STEEL

M3 Square Pull Handle Stainless Steel + C4 Keyed Lock & Turn Unit



M3 Round Pull Handle

- Grip size: 32mm diameter
- | | |
|--------------------------------------|----------|
| Size: 450mm, centre to centre: 300mm | 785SS450 |
| Size: 600mm, centre to centre: 450mm | 785SS600 |

M3 Square Pull Handle

- Grip size: 25mm diameter
- | | |
|--------------------------------------|----------|
| Size: 450mm, centre to centre: 300mm | 786SS450 |
| Size: 600mm, centre to centre: 450mm | 786SS600 |

M3 Torch Pull Handle

- Grip size: 25mm diameter
- | | |
|--------------------------------------|-------|
| Size: 530mm, centre to centre: 250mm | 784SS |
|--------------------------------------|-------|

M3 Offset Pull Handle

- Grip size: 25 x 25mm diameter
- | | |
|--------------------------------------|----------|
| Size: 600mm, centre to centre: 575mm | 783SS600 |
|--------------------------------------|----------|

All M3 Handles are: 316 Marine grade stainless steel tube. Back to back pair. Suits door thickness 40-52mm. Fixings supplied

Pull Handle Lock Kit

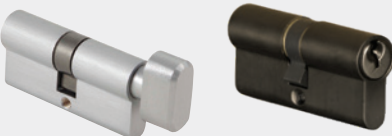
Lock kits for pull handles are available in Satin Nickel, Satin Graphite and Matt Black.

Square Rosette	716SNSLK60	SN
	716SGSLK60	SG
	716BLKSLK60	MB
Round Rosette	716SNRLK60	SN
	716SGRLK60	SG
	716BLKRLK60	MB



Euro Cylinder

Cylinder and turn 70mm	717SG70KD	SG
Cylinder and turn 70mm	717BLK70KD	MB
Cylinder and turn 70mm	717SN70KD	SN



LOCKABLE WITH KEY

Order Form

NAME:

PHONE NR:

EMAIL:

Passage sets

Door Lever Name	Code	QTY

Privacy Handles

For bathroom and toilet doors

Door Lever Name	Code	QTY

Dummy Handles

For wardrobes and other doors without latches (one handle only per packet)

Door Lever Name	Code	QTY

S-Range Square Rosette Cover

S-Range Square Cover	Code	QTY

Note For S-Range handles if you like a square rosette/cover: You must order round rosette handles + Square covers separately (see page 9).

Hinges

Hinges Name	Code	QTY

Door Stops

Floor Mount, Wall Mount, Overhead & Latching

Door Stop Name	Code	QTY

Sliding Doors

Flush Pulls, Cavity Sliders & Barn doors

Pull Name	Code	QTY

Entrance Doors

For Pull handles don't forget to order lock kit (716) & euro cylinder (717).

Entrance Set Name	Code	QTY

Banister Brackets

Banister Name	Code	QTY

General Hardware

Name	Code	QTY

Miles Nelson[®]
Architectural Hardware est. 1928

T: 0800 663 5766
E: info@milesnelson.co.nz

To view the full range of products visit:

 milesnelson.co.nz

Follow us on:

 [milesnelsonNZ](https://www.facebook.com/milesnelsonNZ)

 [MilesNelsonNZ](https://www.pinterest.com/MilesNelsonNZ)

 [milesnelsonnz](https://www.instagram.com/milesnelsonnz)